

Get Results

You Can Trust—

*More Quickly and
Easily than Ever Before!*

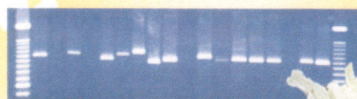


Plant Viral Group tests by Agdia

Agdia PCR-based plant viral group tests offer enhanced sensitivity compared to other methods of testing, while eliminating the need to perform numerous specific tests. Agdia viral group tests are applicable to all plant species and are useful in many aspects of plant research and plant propagation.

Proven Advantages:

- Detection of members and their strains within a plant virus group – using a single test! This means you'll get reliable results quickly and easily.
- Detection of plant viruses for which commercial antisera is not available.
- Detection of very low titers of viruses, which typically go undetected by other methods.
- Detection of uncharacterized viruses and demonstration that they belong to a specific group.
- Confirmation of other test results.



Agdia PCR group tests available in Testing Services

Begomovirus group
Bromoviridae group
Carlavirus group*
Carmovirus group*
Closteroviridae group
Comovirus group

Curtovirus group
Dianthovirus group*
Fabavirus group
Ilarvirus group*
Luteoviridae group
Nepovirus group*

Potexvirus group
Potyviridae group
Tobamovirus group*
Tombusvirus group
Tospovirus group*
Trichovirus group

*Primers also available

For more information on PCR group tests visit Agdia's website: www.agdia.com



agdia® Your partner in agricultural diagnostics

30380 County Road 6 • Elkhart, Indiana 46514 USA • phone: 574-264-2014
toll free: (USA) 800-622-4342 • fax: 574-264-2153 • website www.agdia.com • email: info@agdia.com

AGDIA TESTING SERVICES

20 ROUTINE PCR GROUP TESTS (plus Phytoplasma)

Primers in green are available for sale

Begomovirus Group

African cassava mosaic virus (ACMV)
Bean dwarf mosaic virus (BDMV)
Bean golden mosaic virus (BGMV)
Bean golden yellow mosaic virus (BGYMV)
Cabbage leaf curl virus (CabLCuV)
Chino del tomato virus (CdTV)
Pepper huasteco virus (PHV)
Squash leaf curl virus (SLCV)
Sweet potato leaf curl virus (SPLCV)
Tomato golden mosaic virus (TGMV)
Tomato mottle virus (ToMoV)
Tomato yellow leaf curl virus (TYLCV)

Bromoviridae Group (Detects members of Bromovirus, Alfamovirus, Cucumovirus, some Ilarviruses, and unassigned viruses of Bromoviridae family)

Alfalfa mosaic virus (AMV)
Broad bean mottle virus (BBMV)
Brome mosaic virus (BMV)
Cassia yellow blotch virus (CYBV)
Cowpea chlorotic mottle virus (CCMV)
Cucumber mosaic virus (CMV)
Peanut stunt virus (PSV)
Pelargonium zonate spot virus (PZSV)
Spring beauty latent virus (SBLV)
Tomato aspermy virus (TAV)

Carlavirus Group

Blueberry scorch virus (BIScV)
Carnation latent virus (CLV)
Chrysanthemum virus B (CVB)
Coleus vein necrosis virus (CVNV)
Garlic common latent virus (GarCLV)
Kalanchoe latent virus (KLV)
Lily symptomless virus (LSV)
Pea streak virus (PeSV)
Phlox virus M (PhlVM)
Potato latent virus (PotLV)
Potato virus M (PVM)
Potato virus S (PVS)
Red clover vein mosaic virus (RCVMV)
Shallot latent virus (SLV)

Carmovirus Group (Detects some Tombusviruses & Dianthovirus)

Angelonia flower break virus (AnFBV)
Calibrachoa mottle virus (CbMV)
Cardamine chlorotic fleck virus (CCFV)
Carnation mottle virus (CarMV)
Cowpea mottle virus (CPMoV)
Elderberry latent virus (ELV)
Hibiscus chlorotic ringspot virus (HCRSV)
Melon necrotic spot virus (MNSV)
Pelargonium chlorotic ring pattern virus (PCRPV)
Pelargonium flower break virus (PFBV)
Pelargonium line pattern virus (PLPV)
Pelargonium ringspot virus (PeRSV)
Saguaro cactus virus (SgCV)
Turnip crinkle virus (TCV)

Closteroviridae Group (Detects members of Closterovirus, Crinivirus, and Ampelovirus)

Beet yellows virus (BYV)
Carnation necrotic fleck virus (CNFV)
Citrus tristeza virus (CTV)
Cucurbit yellow stunting disorder virus (CYSVDV)

Grapevine leafroll virus 2 (GLRV-2)
Grapevine leafroll virus 3 (GLRV-3)
Grapevine leafroll virus 4 (GLRV-4)
Grapevine leafroll virus 5 (GLRV-5)
Grapevine leafroll virus 6 (GLRV-6)
Lettuce infectious yellows virus (LIYV)
Tomato chlorosis virus (ToCV)
Tomato infectious chlorosis virus (TICV)

Comovirus Group

Bean pod mottle virus (BPMV)
Broad bean stain virus (BBSV)
Broad bean true mosaic virus (BBTMV)
Cowpea mosaic virus (CPMV)
Squash mosaic virus (SqMV)

Curtovirus Group

Beet curly top virus (BCTV)

Dianthovirus Group

Carnation ringspot virus (CRSV)
Red clover necrotic mosaic virus (RCNMV)
Sweet clover necrotic mosaic virus (SCNMV)

Fabavirus Group

Broad bean wilt virus 1 (BBWV 1)
Broad bean wilt virus 2 (BBWV 2)
Lamium mild mosaic virus (LMMV)

Ilarvirus Group (Detects Alfamovirus and may detect members of Bromovirus & Cucumovirus)

Alfalfa mosaic virus (AMV)
American plum line pattern virus (APLPV)
Apple mosaic virus (ApMV)
Asparagus virus 2 (AV2)
Bacopa chlorosis virus (BaCV)
Citrus leaf rugose virus (CiLRV)
Citrus variegation virus (CVV)
Elm mottle virus (EMoV)
Fragaria chiloensis latent virus (FCILV)
Humulus japonicas latent virus (HJLV)
Hydrangea mosaic virus (HdMV)
Lilac ring mottle virus (LiRMoV)
Parietaria mottle virus (PMoV)
Prune dwarf virus (PDV)
Prunus necrotic ringspot virus (PNRSV)
Spinach latent virus (SpLV)
Tobacco streak virus (TSV)
Tulare apple mosaic virus (TAMV)

Luteoviridae Group (Detects members of Luteovirus, Polerovirus, and unassigned viruses of Luteoviridae family)

Barley yellow dwarf virus (BYDV)
(BYDV-MAV)
(BYDV-PAV)
(BYDV-RMV)
(BYDV-SGV)
Cereal yellow dwarf virus (CYDV-RPV)
Bean leafroll virus (BLRV)
Beet western yellows virus (BWYV)
Pea leafroll virus (PeLRV)
Potato leafroll virus (PLRV)
Soybean dwarf virus (SbDV)
Sugarcane yellow leaf virus (SYLV)

Nepovirus Group (Detects Fabaviruses and some Comoviruses)

Arabidopsis mosaic virus (ArMV)
Blueberry leaf mottle virus (BLMoV)
Cherry leafroll virus (CLRV)
Grape fanleaf virus (GFLV)
Peach rosette mosaic virus (PRMV)
Raspberry ringspot virus (RpRSV)
Tobacco ringspot virus (TRSV)
Tomato black ring virus (TBRV)
Tomato ringspot virus (ToRSV)

Potexvirus Group

Alternanthera mosaic virus (AltMV)
Clover yellow mosaic virus (CIYMV)
Cymbidium mosaic virus (CymMV)
Foxtail mosaic virus (FoMV)
Hosta virus X (HVX)
Hydrangea ringspot virus (HdRSV)
Nandina mosaic virus (NaMV)
Narcissus mosaic virus (NMV)
Papaya mosaic virus (PapMV)
Pepino mosaic virus (PepMV)
Potato aucuba mosaic virus (PAMV)
Potato virus X (PVX)
White clover mosaic virus (WCIMV)

Potyvirus Group (Detects members of Potyvirus,

Bymovirus, Tritimovirus, Ipomovirus)
Alstroemeria mosaic virus (AIMV)
Banana bract mosaic virus (BBrMV)
Bean yellow mosaic virus (BYMV)
Clover yellow vein virus (CIYVV)
Dasheen mosaic virus (DsMV)
Ipomoea vein mosaic virus (IVMV)
Johnsongrass mosaic virus (JGMV)
Leek yellow stripe virus (LYSV)
Lettuce mosaic virus (LMV)
Maize dwarf mosaic virus (MDMV)
Moroccan watermelon mosaic virus (MWMV)
Onion yellow dwarf virus (OYDV)
Ornithogalum mosaic virus (OrMV)
Papaya ringspot virus (PRSV)
Pea seed-borne mosaic virus (PSbMV)
Peanut mottle virus (PeMoV)
Pepper mottle virus (PepMoV)
Pepper veinal mottle virus (PVMV)
Peru tomato mosaic virus (PTV)
Plum pox virus (PPV)
Potato virus A (PVA)
Potato virus V (PVV)
Potato virus Y (PVY)
PVY strain c (PVY-c)
PVY strain o+c (PVY o+c)
PVY strain n (PVY-n)
Shallot yellow stripe virus (SYSV)
Soybean mosaic virus (SMV)
Sugarcane mosaic virus (SCMV)
Sweet potato feathery mottle virus (SPFMV)
Sweet potato mild mottle (SPMMV)
Sweet potato virus G (SPVG)
Tobacco etch virus (TEV)
Tobacco vein banding mosaic virus (TVBMV)
Tobacco vein mottling virus (TVMV)
Turnip mosaic virus (TuMV)
Watermelon mosaic virus (WMV)
Wheat streak mosaic virus (WSMV)
Wheat spindle streak mosaic virus (WSSMV)
Zucchini yellow mosaic virus (ZYMV)

Tobamovirus Group

Cucumber green mottle mosaic virus (CGMMV)
Kyuri green mild mottle virus (KGMMV)
Odontoglossum ringspot virus (ORSV)
Pepper mild mottle virus (PMMoV)
Ribgrass mosaic virus (RMV)
Sunn-hemp mosaic virus (SHMV)
Tobacco mild green mosaic virus (TMGMV)
Tobacco mosaic virus (TMV)
Tomato mosaic virus (ToMV)

Tobravirus Group

Pepper early browning virus (PEBV)
Pepper ringspot virus (PepRSV)
Tobacco rattle virus (TRV)

Tombusvirus Group

Cymbidium ringspot virus (CymRSV)
Cucumber necrosis virus (CuNV)
Lettuce necrotic stunt virus (LNSV)
Pelargonium leaf curl virus (PLCV)
Tomato bushy stunt virus (TBSV)

Tospovirus Group

Capsicum chlorosis virus (CaCV)
Groundnut ringspot virus (GRSV)
Impatiens necrotic spot virus (INSV)
Iris yellow spot virus (IYSV)
Tomato chlorotic spot virus (TCSV)
Tomato spotted wilt virus (TSWV)
Watermelon silver mottle virus (WSMoV)

Trichovirus Group

Apple Chlorotic leaf spot virus (ACLSV)
Potato virus T (PVT)

Tymovirus Group (Detects Tymoviruses and some

Marafiviruses & unassigned viruses)
Andean potato latent virus (APLV)
Belladonna mottle virus (BeMV)
Naize rayado fino virus (MRFV)
Nemesia ring necrosis virus (NeRNV)
Poinsettia mosaic virus (PnMV)
Scrophularia mottle virus (ScrMV)

Phytoplasma

Ash yellows (AshY)
Aster yellows (AY)
Clover proliferation (CP)
Coconut lethal yellows (LY)
Elm yellows (EY)
Lilac witches'-broom (LiWB)
Maize bushy stunt (MBS)
Potato witches'-broom (PWB)
Tomato big bud (BB)
Vinca virescence (VR)
Western X-disease (WX)